



# Ashleigh Primary School and Nursery

21<sup>st</sup> January  
2022

- **Message from Mr. McConnell**
- **Covid Update**
- **Nativity Board Competition**
- **Hat Appeal**
- **Parking**
- **Ashleigh Friends**
- **School Vacancies**
- **Book Recommendation**
- **Diary Dates 2021-2022**
- **After School Club Dates**
- **Previous Newsletters**



**Contact Us**  
Mr. John  
McConnell  
Headteacher

office@ashleigh.  
norfolk.sch.uk

01953 602410

@PrimaryAshleigh

---

## Message from Mr. McConnell

It's been a really busy week for schools across the country due to lots of covid related absences and it's no different at Ashleigh. I'd like to thank you all for your vigilance when it comes to being on the look-out for symptoms and doing everything you can to look after the school and the school community.

Thank you to everyone who replied with their comments about sports day. It was clear that everyone who has been to them previously at Ashleigh has really happy memories of the events. We know that some families have missed the experience altogether, due to Covid restrictions or through being new to the school. We hope that this year we will be able to celebrate together again, and will be looking at the best and safest ways to hold sports day/s. We'll keep you posted!

---

## Covid Update

- Government guidelines remain at day 5 and 6 testing, with two consecutive day's negative lateral flow tests before returning.
- We are seeing cases increase in school, with confirmed cases in Reception, Year 1, Year 3, Year 4, Year 5 and Year 6.
- Year 5 have been the most affected and the Norfolk Outbreak Management Team have been informed.
- If your child seems unwell, even without the main 3 Covid symptoms (fever, new and persistent cough, loss of taste and/or smell), please can they take a lateral flow test to rule out Covid.
- Thank you for your continued support.

---

## Nativity Board Competition

We hope that you had the opportunity to see the school nativity boards on display in Wymondham over the holiday. Ashleigh children created a wonderful board, and we're happy to say we received a £25 book voucher as a result, which will go towards additional reading books for school.

---

## Hat Appeal

- Year 6 will shortly be making hats in DT and taking apart fabric sewn-together examples to look at their construction and pattern pieces.
- If anyone has any fabric (not knitted) hats they no longer want, we would be very grateful to have them as we will need lots!

---

## Parking

Local residents are again asking that parents/carers park considerably outside school. Please do not block driveways or park on the corner of junctions. If you are late collecting your child because you've had to park a little further away and walk, we will look after them in the meantime.

## Ashleigh Friends

Our next Ashleigh Friends PTA meeting is on Zoom on 25th January at 7:30pm. Please use the following login details:

<https://us04web.zoom.us/j/79569869017?pwd=C3PYdYfzZXGt4JKdrNiN8rUan9Efm.1>

Meeting ID: 795 6986 9017

Passcode: Y7sJvi

We hope to see you there!

# ARE YOU PASSIONATE ABOUT OUR SCHOOL?

Ashleigh Friends is a group of friendly parents who support the school by fundraising through fun and social events for all Ashleigh families.

DISCOS

QUIZ NIGHTS

SUMMER FETES

BAKE SALES

CHRISTMAS FAIRS

The money raised is spent on resources for the children that school may not otherwise be able to provide.

If you are a newer parent to school then you won't have seen us so much due to Covid, but we are moving into a new era and would love some new members to revitalise the PTA after this lull.

## School Vacancies

- We currently have the following vacancies at Ashleigh:
  - **Midday Supervisory Assistants.**
  - Salary – £9.25 per hour
  - Monday – Friday: 1 hour twenty minutes per day (11:55am-1:15pm)
  - Term time only.
  - We are seeking to appoint two Midday Supervisory Assistants to join our friendly, enthusiastic team. Duties include supervision of children within school, in outdoor areas and leading play and games. You will need to have a calm and caring manner and enjoy working with children. Being friendly, approachable and able to develop positive and constructive relationships with children and staff is essential. You will receive training as required.

- Job details and an application form can be found at <http://www.ashleighprimary.com/category/news/vacancies/>
- or please contact the school office.

## Ashleigh Teacher Book Recommendation

**Book title:** Ruby's Worry

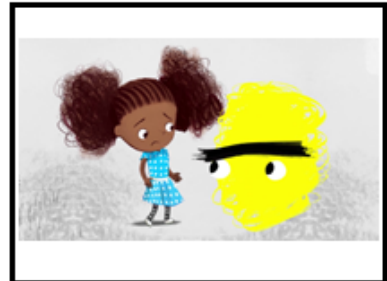
**Author:** Tom Percival

Miss Eyre recommends this book to: All children aged 4 – 11

*Every year this book is always a class favourite. Ruby is a little girl with a big worry. I love this story because it reminds us all that it is normal to have worries and that we are not alone. In the story Ruby gets a chance to find ways of solving her worries and realises that when doing so she is able to help others with theirs too. I love how the illustrations show how a worry can not only grow, but also shrink if you know what to do. It teaches us all a great lesson on how to feel less anxious.*

*Whilst this book is aimed at younger children, the moral of the story is great for any age. The illustrations throughout the book are not only beautiful, but represent how Ruby is feeling at different stages of the story. At her most worried Ruby's world appears a little grey, but as her worry shrinks her world becomes much brighter. Tom Percival has many more brilliant books, all with excellent ways of understanding different emotions. (Some are even hidden in our library.)*

*I hope you enjoy it as much as I do! Please post on twitter with the hashtag #ashleighbookclub to let us know your thoughts on our book recommendation of the week.*



@PrimaryAshleigh



#ashleighbookclub

## Diary Dates

New or updated events

### 2021-2022 Dates

#### Spring Term

Mon 24 <sup>th</sup> Jan	<ul style="list-style-type: none"> <li>• a.m. <b>Year 6</b> Assessments</li> </ul>
Tues 25 <sup>th</sup> Jan	<ul style="list-style-type: none"> <li>• a.m. <b>Year 6</b> Assessments</li> <li>• 7:30pm <b>Ashleigh Friends PTA Zoom Meeting</b> (Log-in details above)</li> </ul>
Wed 26 <sup>th</sup> Jan	<ul style="list-style-type: none"> <li>• a.m. <b>Maple Class</b> Swimming</li> </ul>
Thurs 27 <sup>th</sup> Jan	<ul style="list-style-type: none"> <li>• a.m. <b>Year 6</b> Assessments</li> <li>• 4:00pm <b>Years 4 &amp; 5</b> Football matches at Kett's Park</li> </ul>
Fri 28 <sup>th</sup> Jan	<ul style="list-style-type: none"> <li>• a.m. <b>Year 6</b> Assessments</li> </ul>
Wed 2 <sup>nd</sup> Feb	<ul style="list-style-type: none"> <li>• a.m. <b>Maple Class</b> Swimming</li> </ul>
Mon 7 <sup>th</sup> Feb	<ul style="list-style-type: none"> <li>• Reception Hearing &amp; Vision Screening</li> </ul>
Tues 8 <sup>th</sup> Feb	<ul style="list-style-type: none"> <li>• Reception Hearing &amp; Vision Screening</li> </ul>
Wed 9 <sup>th</sup> Feb	<ul style="list-style-type: none"> <li>• a.m. <b>Maple Class</b> Swimming</li> </ul>
Thurs 10 <sup>th</sup> Feb	<ul style="list-style-type: none"> <li>• Reception Hearing &amp; Vision Screening</li> </ul>
Fri 11 <sup>th</sup> Feb	<ul style="list-style-type: none"> <li>• 3:00/3:15pm School/Nursery close for Half Term</li> </ul>

Mon 21 <sup>st</sup> Feb	• 8:30am/8:40am Nursery/School reopen
Wed 23 <sup>rd</sup> Feb	• a.m. <b>Maple Class</b> Swimming
Wed 2 <sup>nd</sup> Mar	• a.m. <b>Maple Class</b> Swimming
Wed 9 <sup>th</sup> Mar	• a.m. <b>Maple Class</b> Swimming
Wed 16 <sup>th</sup> Mar	• a.m. <b>Maple Class</b> Swimming
Fri 18 <sup>th</sup> Mar	• Red Nose Day
Wed 23 <sup>rd</sup> Mar	• a.m. <b>Maple Class</b> Swimming
Wed 30 <sup>th</sup> Mar	• a.m. <b>Maple Class</b> Swimming
Fri 1 <sup>st</sup> Apr	• 3:00/3:15pm School/Nursery close for Half Term
<b>Summer Term</b>	
Tues 19 <sup>th</sup> Apr	• Staff INSET Day
Wed 20 <sup>th</sup> Apr	• 8:30am/8:40am Nursery/School reopen
Mon 2 <sup>nd</sup> May	• Bank Holiday
Fri 27 <sup>th</sup> May	• 3:00/3:15pm School/Nursery close for Half Term
Mon 6 <sup>th</sup> Jun	• 8:30am/8:40am Nursery/School reopen
Fri 22 <sup>nd</sup> Jul	• 3:00/3:15pm School/Nursery close for Summer Holiday

## After School Clubs

Day	Club	Years	First Session	Last Session	Pick-Up
Monday	<b>Bouncercise</b>	<b>1 &amp; 2</b>	10 <sup>th</sup> January	25 <sup>th</sup> February	4:00pm
Monday	<b>Musical Theatre</b>	<b>1 – 6</b>	10 <sup>th</sup> January	21 <sup>st</sup> March	4:00pm
Tuesday	<b>Football (2 groups)</b>	<b>1 – 6</b>	11 <sup>th</sup> January	22 <sup>nd</sup> March	4:00pm
Wednesday	<b>Mini-Tennis</b>	<b>1 &amp; 2</b>	12 <sup>th</sup> January	23 <sup>rd</sup> March	4:00pm
Wednesday	<b>Street Dance</b>	<b>1 – 6</b>	12 <sup>th</sup> January	23 <sup>rd</sup> March	4:00pm
Thursday	<b>Football</b>	<b>1 &amp; 2</b>	13 <sup>th</sup> January	24 <sup>th</sup> March	4:00pm
Thursday	<b>Karate</b>	<b>1 – 6</b>	13 <sup>th</sup> January	24 <sup>th</sup> March	4:00pm
Thursday	<b>Ukulele</b>	<b>1 – 6</b>	13 <sup>th</sup> January	24 <sup>th</sup> March	3:45pm
Friday	<b>Bouncercise</b>	<b>3 – 6</b>	14 <sup>th</sup> January	21 <sup>st</sup> February	4:00pm
Friday	<b>Dodgeball</b>	<b>3 – 6</b>	14 <sup>th</sup> January	25 <sup>th</sup> March	4:00pm

Please remember to let the office know if your child will not be attending a club for any reason.

## Previous Newsletters

If you would like information from any of our previous newsletters, please contact the office who will be able to help you.